

iARTS
D E C O R



www.iartsdecor.com

我之藝術有限公司

Tel +886-2-2778-6908

E-mail/ jliu@iartsdecor.com

台北市大安區仁愛路三段 5 巷 1 弄 21-1 號

Ren Ai Rd, Sec 3, Ln 5, Aly 1, No 21-1, Taipei City



iARTs Decor promotes artful living, creating exquisite complimentary environments by merging interior design with contemporary art.

We collaborate with architects, interior designers, and luxury property developers worldwide, integrating minimalistic organic elements from the East and West to create elegant timeless interiors.

Each individual work of the artists represented under our fold is striking and deceptively simple upon first glance, growing in complexity over reflection, revealing stories and emotions within.

iARTs Decor welcomes inquiries on private commissions tailor-made for your choice of expression.

我之藝術融合室內設計與當代藝術，營造兩者協作的雅緻環境進而提升生活美學。

合作的對象包含各地建築設計師、室內設計師、豪宅開發商。並整合東西方自然、極簡元素，營造高雅不朽的裝飾美學。

旗下藝術家的每一件作品，皆能從初見時奪目的簡約，隨著倒影反爍，緩緩浮現藝術家們複雜的情感敘事。

我之藝術誠摯歡迎預約詢問，委託訂製專屬您的品味風格。





MARI-RUTH ODA



MARI-RUTH ODA 小田・瑪莉露絲

JAPAN 日本

Mari-Ruth Oda is a Japanese artist, born in Papua New Guinea and lived in Bangkok, Tokyo, Belgrade and New York before moving to Manchester. She has undertaken commissions from all over the globe and her artworks have been exhibited internationally including the Royal Academy of Arts London, Shigaraki Ceramic Cultural Park in Japan, Musée de Carouge in Switzerland and the Victoria & Albert Museum of London.

"I am inspired by nature, in its various shapes and forms as well as my feelings of reverence towards it. Being of Japanese background, this may have its roots in the nature worshipping ideas of Shintoism. In nature form seems to repeat itself in differing context and scale. I enjoy abstracting a form out of its context and boiling it down to its bare essence that first attracted me to the form. This includes my emotional response to it. The shape left is something ambiguous that could be interpreted in many ways. It is often a combination of natural forms that are neither one thing nor another, with added intentions and feelings that I want to convey. Ultimately, however, I believe how one identifies with and draws meaning from a sculpture is unique to the observer".

小田・瑪莉露絲是一位在巴布亞紐幾內亞出生的日本藝術家。移居曼徹斯特前曾在曼谷、東京、貝爾格萊德以及紐約等地生活。他經手世界各地的藝術委託，也參與國際性展覽展，包括倫敦皇家藝術學院、日本陶藝之森、瑞士卡魯日博物館以及倫敦維多利亞與艾伯特博物館。

「我真情的敬愛大自然，更被她的千形百態所啟發。這也許源自於身為日本人那股傳統神道教對大自然的崇敬。大自然中，輪廓似乎在不同的情境與規模中不斷重複著。我很享受從自然的脈絡中萃取他的形體，注入我情感的反射後，冶煉至其最赤裸的本質。形的成品是曖昧的，可解讀成各種不同的樣子。自然型態的結合，因我所傳達的目的與情感，而不被單一定義。最終，我相信對一個觀察者來說，從雕塑中抽絲剝繭出的意涵，是無比獨特的。



Bean Mobius III
Mari-Ruth Oda | JP
Marble, Jesmonite
64x45x15cm

莫比烏斯豆 III
小田・瑪莉露絲 | 日本
水性樹脂、大理石
可訂製



Whole III

Mari-Ruth Oda | JP

Jesmonite

162x127x51cm

完全 III

小田・瑪莉露絲 | 日本

水性樹脂

可訂製



Triangular Mobius

Mari-Ruth Oda | JP

Jesmonite

60x45x15 cm

三角莫比烏斯

小田・瑪莉露絲 | 日本

水性樹脂

可訂製



Fuku
Mari-Ruth Oda | JP
Ceramic
20x16x9cm

福
小田・瑪莉露絲 | 日本
陶瓷
可訂製



Seedling
Mari-Ruth Oda | JP
Ceramic
30x19x11cm

種籽
小田・瑪莉露絲 | 日本
陶瓷
可訂製



A Book That Feeds

Mari-Ruth Oda | JP

White marble Jesmonite

8x12x11cm

求知若渴

小田・瑪莉露絲 | 日本

白色大理石、水性樹脂

可訂製



Seating Under a Tree

Mari-Ruth Oda | JP

Yellow sandstone Jesmonite

15x12x17cm

在樹下

小田・瑪莉露絲 | 日本

黃砂岩、水性樹脂

可訂製



Afloat Within

Mari-Ruth Oda | JP

Yellow sandstone Jesmonite

26x26x22cm

飄浮之流

小田・瑪莉露絲 | 日本

黃砂岩、水性樹脂

可訂製



I Hear You

Mari-Ruth Oda | JP

Bath stone Jesmonite

41x24x15cm

傾聽

小田・瑪莉露絲 | 日本

巴斯石灰石、水性樹脂

可訂製



Sound of a Lily
Mari-Ruth Oda | JP
Jesmonite
12x11x4cm

百合之聲

小田・瑪莉露絲 | 日本
水性樹脂
可訂製



Samara
Mari-Ruth Oda | JP
Jesmonite
12x13x5cm

薩馬拉

小田・瑪莉露絲 | 日本
水性樹脂
可訂製



Transmute
Mari-Ruth Oda | JP
Jesmonite
35x21x9cm

嬗變

小田・瑪莉露絲 | 日本
水性樹脂
可訂製



Kaguya
Mari-Ruth Oda | JP
Jesmonite
15x7x6cm

輝耀姬

小田・瑪莉露絲 | 日本
水性樹脂
可訂製



Wa

Mari-Ruth Oda | JP
White marble Jesmonite
29x27x8cm

哇

小田・瑪莉露絲 | 日本
水性樹脂
可訂製



Bean Mobius II

Mari-Ruth Oda | JP
White marble Jesmonite
40x30x9cm

莫比烏斯豆

小田・瑪莉露絲 | 日本
白色大理石、水性樹脂
可訂製



Moose Dream Protection

Mari-Ruth Oda | JP
Natural stone Jesmonite
25x34x10cm

捕夢者

小田・瑪莉露絲 | 日本
天然石、水性樹脂
可訂製



Watery Moon

Mari-Ruth Oda | JP
Bath stone Jesmonite
49x45x24cm

月光海

小田・瑪莉露絲 | 日本
巴斯石灰石、水性樹脂
可訂製



Bean

Mari-Ruth Oda | JP

Stoneware

44x72x64cm

豆豆椅

小田・瑪莉露絲 | 日本

炆器

可訂製



Flower Seat

Mari-Ruth Oda | JP

White marble Jesmonite

76x76x57cm

賞花椅

小田・瑪莉露絲 | 日本

白色大理石、水性樹脂

可訂製



The Source

Mari-Ruth Oda | JP
Resin Fibreglass
225x85x54cm

起源

小田・瑪莉露絲 | 日本
樹脂玻璃纖維
售出
可訂製



See

Mari-Ruth Oda | JP
Resin Fibreglass
55x43x20cm

領會

小田・瑪莉露絲 | 日本
樹脂玻璃纖維
售出
可訂製



White Round Form
 Mari-Ruth Oda | JP
 Resin Fibreglass
 58x69x38 cm

形的留白

小田・瑪莉露絲 | 日本
 樹脂玻璃纖維
 售出
 可訂製



Be
 Mari-Ruth Oda | JP
 Resin Fibreglass
 130x150x66 cm

存在

小田・瑪莉露絲 | 日本
 樹脂玻璃纖維
 售出
 可訂製



Whole II

Mari-Ruth Oda | JP
Jesmonite
88x316x57cm

完全 II

小田・瑪莉露絲 | 日本
水性樹脂
現品

Whole I

Mari-Ruth Oda | JP
Jesmonite
90x135x83cm

完全 I

小田・瑪莉露絲 | 日本
水性樹脂
現品





Corinthia sculptural series

Mari-Ruth Oda | JP

Jesmonite

科林西亞雕塑系列

小田・瑪莉露絲 | 日本

水性樹脂

售出

可訂製



Crescent Eclipse

Mari-Ruth Oda | JP

Jesmonite

100x74x12cm

新月

小田・瑪莉露絲 | 日本

水性樹脂

現品

可訂製



Unfurling

Mari-Ruth Oda | JP

Jesmonite

100x74x14cm

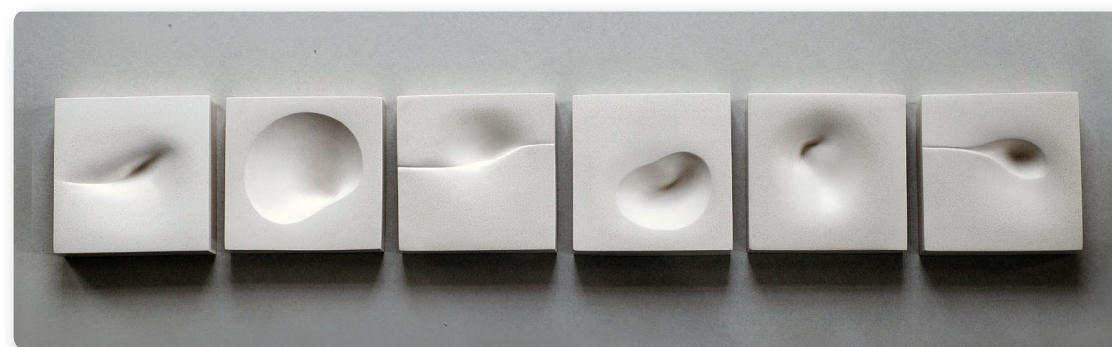
展開

小田・瑪莉露絲 | 日本

水性樹脂

現品

可訂製



Space Between The Lines

Mari-Ruth Oda | JP

Jesmonite

25x150x6cm

線條間的留白

小田・瑪莉露絲 | 日本

水性樹脂

現品

可訂製



Wave Whispers

Mari-Ruth Oda | JP
Bath stone Jesmonite
25x25x7cm

浪之聲

小田・瑪莉露絲 | 日本
巴斯石灰石、水性樹脂
現品
可訂製



Here

Mari-Ruth Oda | JP
Bath stone Jesmonite
25x25x7cm

當下

小田・瑪莉露絲 | 日本
巴斯石灰石、水性樹脂
現品
可訂製



Book Seed

Mari-Ruth Oda | JP
Bath stone Jesmonite
25x25x7cm

種子書

小田・瑪莉露絲 | 日本
巴斯石灰石、水性樹脂
現品
可訂製

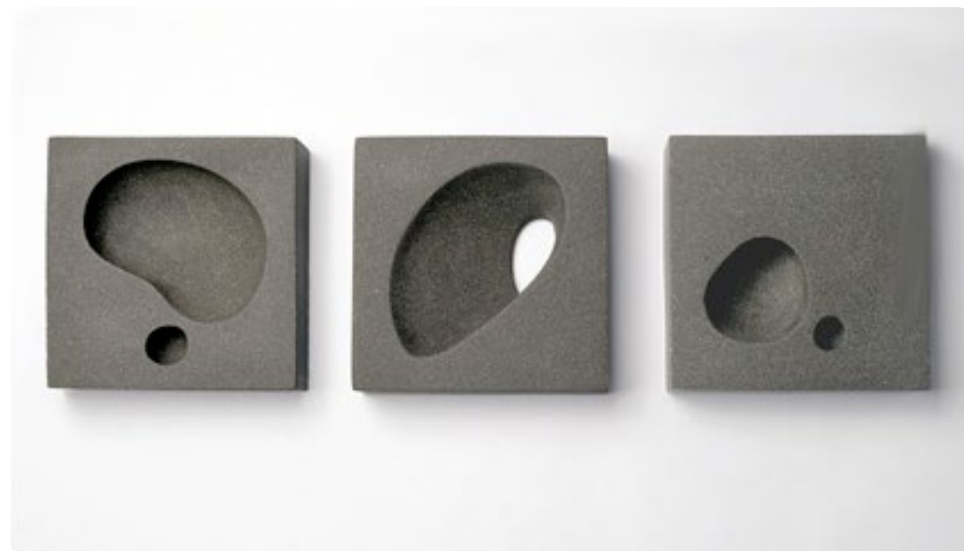


Meandering

Mari-Ruth Oda | JP
Bath stone Jesmonite
25x175x6cm

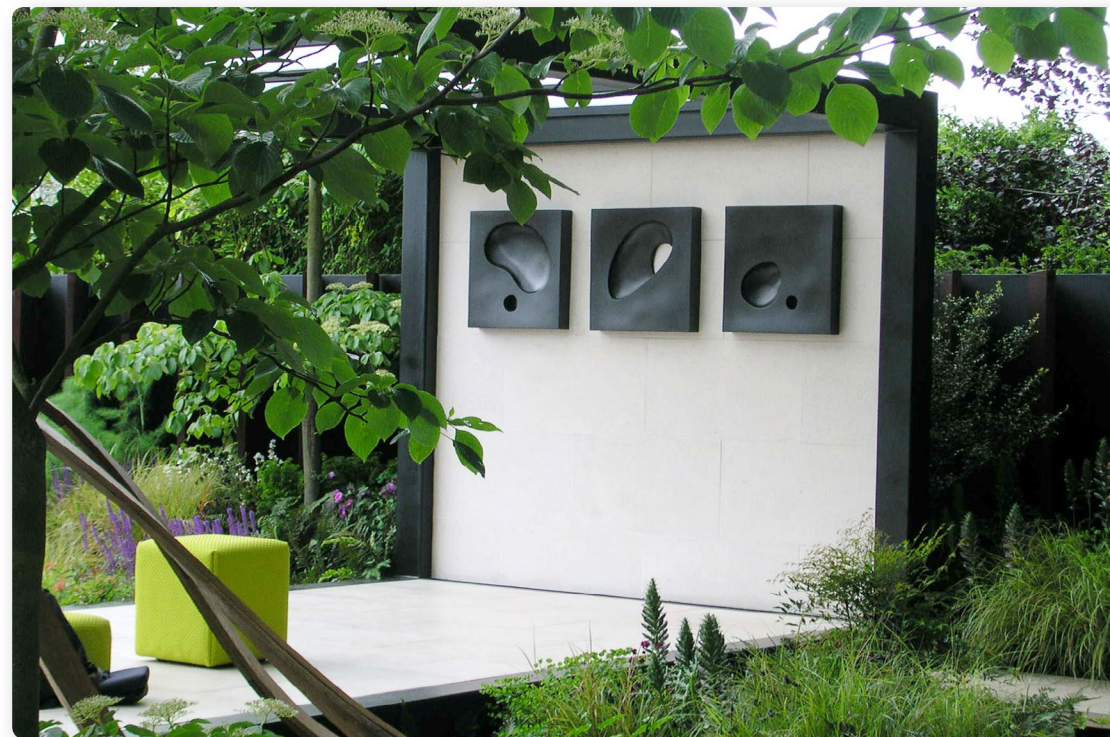
蜿蜒

小田・瑪莉露絲 | 日本
巴斯石灰石、水性樹脂
現品
可訂製



Rockpool Holes
Mari-Ruth Oda | JP
Stoneware Ceramics
25x25x6cm

岩池
小田・瑪莉露絲 | 日本
陶瓷
售出
可訂製



學歷

EDUCATION

- 1996-1997 University of Wolverhampton: MA in Art and Design Network:
Ceramics (Distinction)
- 1993-1996 Manchester Metropolitan University: BA(Hons) Three
Dimensional Design: Wood/Metal/Ceramics & Glass (2:1)
- 1992-1993 Middlesex University: Foundation Course in Art and Design

公共藝術收藏

PUBLIC COLLECTIONS

- 2002 Manchester Art Gallery, Manchester
- 2002 Shigaraki Ceramic Cultural Park, Shigaraki, Japan

獲獎紀錄

AWARDS

- 2012 Research and Development Grant, Arts Council of England
- 2011 Winner of 2nd Prize Award for East West Awards, London
- 2010 Shortlisted for National Sculpture Competition, Bluecoat Display
Centre, Liverpool
- 2000 Setting Up Grant Award, Crafts Council London
- 1999 Keith Godwin Award for Sculpture Manchester Academy of Fine Art

精選公共藝術與委託合作案例

SELECTED PUBLIC ART & CORPORATE COMMISSIONS

- 2019 The Dubai Majlis Show Garden, Chelsea Flower Show, London
- 2018 SunCity Tachikawa, Tokyo with SWA Group
- 2016 Riverside Extra Care, Leads Road, Hull
Walton Centre, Liverpool
- 2011 Corinthia Hotel, London
- 2009 Changing Room plaques, Multi Agency Unit, The Learning Campus, Swindon
- 2008 Main Entrance, Multi Agency Unit, The Learning Campus, Swindon
Hotel Marielyst, Denmark
- 2007 Gulf Hotel, Manama, Kingdom of Bahrain
Cancer Research UK Show Garden, Chelsea Flower Show, London
- 2006 Brimble Hill School, Swindon
Uplands School, Swindon
Philimore of South Kensington, London
Pizza Express St Martin's Lane, London
- 2005 Baker Tilly, London
St. Regis Museum Hotel, San Francisco, USA
Cowley Manor Hotel and Spa Gardens, Cowley, Gloucestershire
- 2004 Reception Area, Philimores of Kensington, London
Westminster City Inn, London
- 2003 Jasmine, Bray, Berkshire
- 2002 Manchester Art Gallery Café/Conference Room, Manchester
Cowley Manor Hotel and Spa, Cowley, Gloucestershire

SELECTED EXHIBITIONS

- 2020 Solo Show, Francis Gallery, Bath
- 2018 Francis Gallery, 3-man Pop Up Show in London
- 2016 Eastern Aesthetics, Bluecoat Display Centre, Liverpool
- 2015 Whole Pinsent Masons, Bishopsgate, London
- 2014 108, Solo Show Cupola Gallery, Sheffield
- 2013 Barbed Pop Up at NEO Bankside, Southwark, London
Summer Exhibition, Gallerie Nummer 40, Doetinchem, Netherlands
- 2012 Whole: Solo Exhibition, Tameside Central Gallery, Ashton-under-Lyne, Manchester
- 2011 East West Art Award Competition, La Galleria, Pall Mall, London
A bit of what you fancy and 20th Anniversary Show, Cupola Gallery, Sheffield
- 2010 National Sculpture Competition, Bluecoat Display Centre, Liverpool
Japanese Jewellery Designers and Mari-Ruth Oda, Bluecoat Display Centre, Liverpool
Off-White, Unit 12, Tixall, Stafford UK
- 2008 Shizen: Solo Exhibition, Cupola Gallery, Sheffield
Portfolio, Bluecoat Display Centre, Liverpool & Crafts Council of Ireland, Kilkenny
COLLECT, Victoria and Albert Museum London & Bluecoat Display Centre, Liverpool
- 2007 Summer Exhibition, Royal Academy of Arts, London
- 2006 594 Ceramicists, Shigaraki Ceramic Cultural Park, Shigaraki, Japan
Go Figure, Bluecoat Display Centre, Liverpool
2-man show with David Binns, Carlin Gallery, Paris, France
- 2005 Collectors Ireland, Crafts Council of Ireland, Kilkenny
Touch Me, Victoria and Albert Museum, London
Design-Imagination-Function-Production, The Study Gallery, Plymouth
- 2004 Genius, Cupola Gallery, Sheffield
Personal Selection, Brewery Arts, Cirencester
COLLECT, Victoria and Albert Museum London & Bluecoat Display Centre, Liverpool
- 2003 What is Craft? The Hub, Sleaford, Lincolnshire
41st Asahi Ceramic Competition, Japan (tour)
City of Carouge Prize 2003, Musee de Carouge, Geneva, Switzerland
Summer Exhibition, The Scottish Gallery, Edinburgh
- 2002 Solo Show, Gallerie Maronie, Kyoto, Japan
- 2001 Solo Show, Cupola Gallery, Sheffield
Make Me Too, CUBE Gallery, Manchester
Make Me, Object Gallery, Sydney, Australia
- 2000 Raku, Rufford Crafts Centre, Newark
Garden Show, The Scottish Gallery, Edinburgh

MARI-RUTH ODA

我之藝術 iARTs Decor Co., Ltd
www.iartsdecor.com

T. 02-2778-6908 | No. 54283976

台北市大安區仁愛路三段5巷1弄21-1號